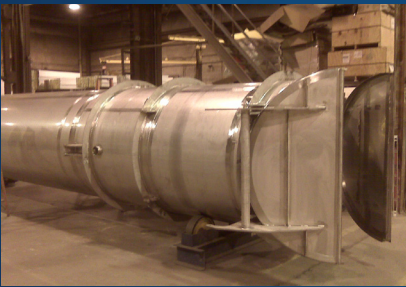


### Why Enerquip?

Enerquip can design and build a wide variety of stainless steel process components for OEM systems. We can meet your code requirements while working within your schedule limitations. Our team has the expertise, knowledge and industry experience to build to your design, or create custom equipment components to your specifications



### Project Examples:

- Ductwork & Transitions
- Columns
- Exhaust Stacks & Scrubbers
- Membrane & Filter Housings
- Pre-fabricated Pipe Spools
- Single shell tanks/pressure vessels
- Distributor Plates
- Pump Stands/Carts



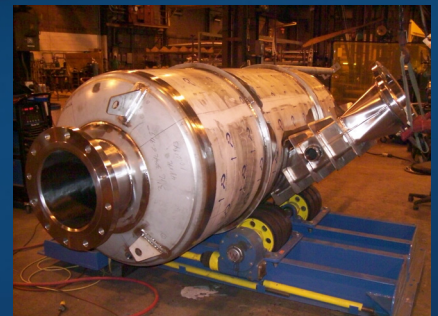
**Sizes:** From 2" to 48" diameters, and lengths up to 65 feet

**Weight:** 2 Overhead cranes lift up to 40,000 lbs combined

**Materials:** 304ss, 316Lss, Duplex, AL6XN, Hastelloy, Copper Nickel

**Codes:** TEMA B, C, & R, ASME, 3-A, CRN, PED, API

**Lead-times:** Our delivery time is typically half that of many competitors!



Put us to the test on your next stainless steel components project, and you will see why industry leading OEM's rely on Enerquip – When Schedule Counts.



## OEM Custom Fabrication



### Advantages of using Enerquip for custom fabrication:

- Experienced in-house CAD team with 2-D and 3-D capabilities
- ASME U and R code stamps – certified welders
- In-house CNC machining center for faster turnaround of parts
- Stringent Quality Control process
- Experienced welders, fitters, assemblers, finishers
- Bead-blasting, electro-polishing, passivation available
- Proven Project Management processes keep your project on track
- Complete inspection and hydro-testing (where applicable)
- Preparation for shipment, and reliable shipping to your plant or jobsite on time (or early).
- Your company will be so impressed with our quality and service that they will choose Enerquip to be their preferred supplier of system components!

