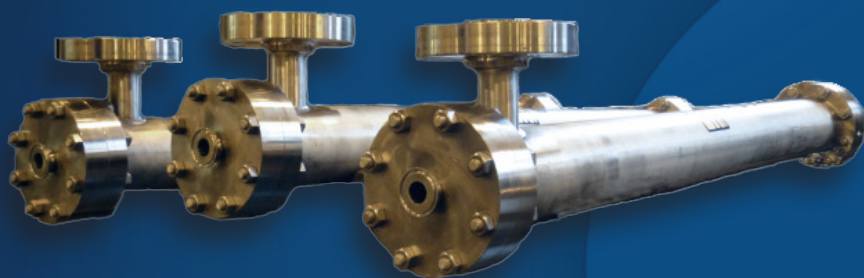


Sanitary Stainless Steel Membrane Housings

When Schedule Counts



- Typical lead-time is under 4 weeks
- Available in 4", 6" and 8" diameters and various lengths
- Variety of finishes available from 32 Ra for product contact surfaces, to lower cost mill finish.
- Exterior bead blasting available for a uniform satin finish
- Available in 304 SS, 316 SS and higher alloys
- Closure types include snap-ring, tri-clamp or bolted flange

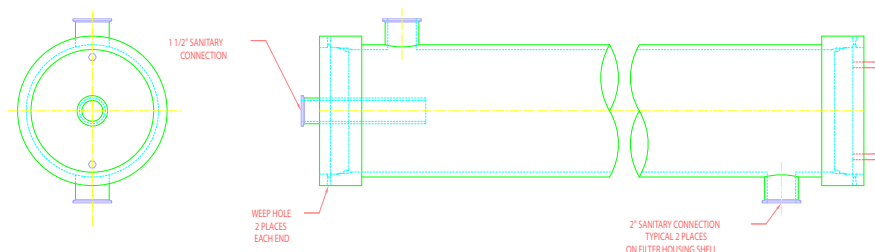


- 3A Approved design reviewed and approved by the USDA
- Durable stainless steel does not warp or weep, and is not affected by UV rays
- Large sanitary tri-clamp side ports ensure maximum flow
- Welds are ground smooth and polished to eliminate product hold-up
- Available in lower pressure 650 psi and high pressure 950 psi units, rated for up to 200F



- ASME code stamped units available
- Non-sanitary housings available for industrial applications
- Lighter and easier to handle than FRP and PVC housings with the same pressure ratings

Sanitary Stainless Steel Membrane Housings



STYLE	SNAP-RING	TRI-CLAMP	BOLTED FLANGE
Materials	304L SS	304L SS	304L SS
	316L SS	316L SS	316L SS
Design	up to 950 psig	up to 600 psig	up to 1100 psig
Permeate Ports	1.5" Tri-clamp	1.5" Tri-clamp	1.5" Tri-clamp
Side Ports	2" or 3" Tri-clamp	2" or 3" Tri-clamp	2" or 3" Tri-clamp
Element Capacity	1 - 5	1 - 5	1 - 5
Interior Finishes	32Ra polished	32Ra polished	32Ra polished
	Mill finish	Mill finish	Mill finish
Exterior Finishes	32Ra polished	32Ra polished	32Ra polished
	40Ra polished	40Ra polished	40Ra polished
	Mill finish	Mill finish	Mill finish
	Bead blasted satin	Bead blasted satin	Bead blasted satin
Code	3-A Compliant	3-A Compliant	
		ASME	ASME
	None-code	None-code	None-code

